

DO SCHOOLS IN INDIA GET THEIR MONEY?



INDIA - RURAL

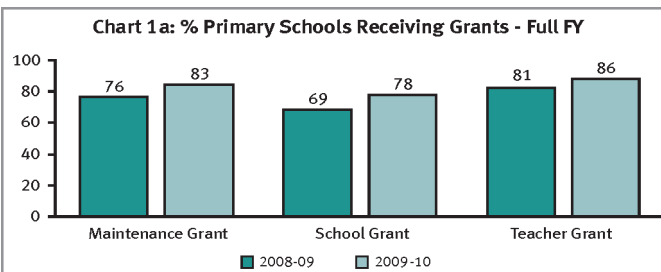
Table 1: SSA Allocation and Expenditure

	2008-09		2009-10	
	Allocation	Expenditure	Allocation	Expenditure
SSA (In Crore)	24,592.84	19,322.48	27,876.29	20,658.15
School Grants We Track (In Crore)	1,586.23	1,486.56	1,635.32	1,555.75
Per District Allocation (In Crore)	39.29	xxxxx	44.53	xxxxx
Per Child Expenditure (Rs)	xxxxx	1,450.55	xxxxx	1,550.81

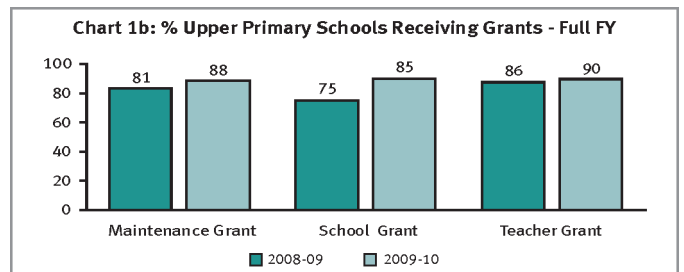
Annual School Grants Under SSA

School Maintenance Grant (SMG)	₹5,000 for upto 3 classrooms and ₹10,000 for more than 3 classrooms
School Grant (SG)	₹5,000 for primary schools and ₹7,000 for upper primary schools (UPS)
Teacher Learning Material Grant (TLM)	₹500 per teacher

DO SCHOOLS GET THEIR MONEY?

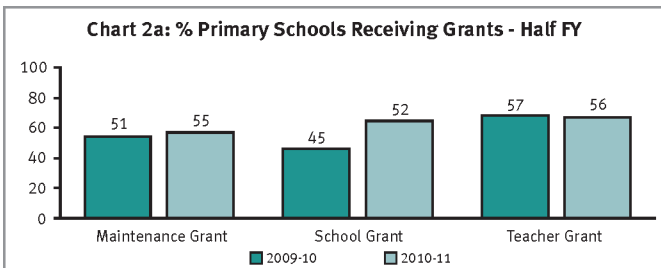


Note: # schools responding yes (2008-09): SMG - 5739, SG - 5014, TLM - 6170
schools responding yes (2009-10): SMG - 5927, SG - 5283, TLM - 5680

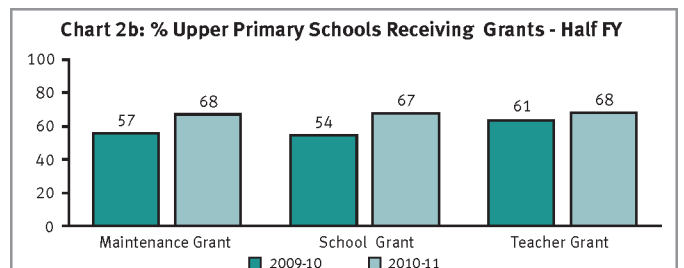


Note: # schools responding yes (2008-09): SMG - 3371, SG - 2961, TLM - 3566
schools responding yes (2009-10): SMG - 3558, SG - 3376, TLM - 3556

DOES MONEY REACH ON TIME?



Note: # schools responding yes (2009-10): SMG - 3165, SG - 2747, TLM - 3533
schools responding yes (2010-11): SMG - 3723, SG - 3335, TLM - 3461



Note: # schools responding yes (2009-10): SMG - 1914, SG - 1732, TLM - 2001
schools responding yes (2010-11): SMG - 2554, SG - 2496, TLM - 2499

DO SCHOOLS GET ALL THEIR MONEY (# GRANTS)?

Table 2a: % Schools Reporting Receipt of Grants - Full FY

	Primary		Upper Primary	
	2008-09	2009-10	2008-09	2009-10
No Grant	6	4	4	2
Only One Grant	14	9	11	10
Only Two Grants	26	19	25	17
All Three Grants	54	68	60	70

Table 2b: % Schools Reporting Receipt of Grants - Half FY

	Primary		Upper Primary	
	2009-10	2010-11	2009-10	2010-11
No Grant	28	29	26	20
Only One Grant	20	12	18	10
Only Two Grants	23	15	20	14
All Three Grants	29	44	36	56

Sample Size

Schools 1-4/5 (Primary Schools): 2009-9405, 2010-7710
Schools 1-7/8 (Upper Primary Schools): 2009-4826, 2010-5311
Total: 2009-14231, 2010-13021

DO SCHOOLS SPEND THEIR MONEY?

Table 3a: Primary Schools - Receiving and Spending Grants in Full FY

	# Schools		% Schools	
	2008-09	2009-10	2008-09	2009-10
Maintenance Grant	4,525	4,874	90	89
School Grant	3,945	4,253	91	90
Teacher Grant	4,781	4,647	92	94

Table 3b: Upper Primary Schools- Receiving and Spending Grants in Full FY

	# Schools		% Schools	
	2008-09	2009-10	2008-09	2009-10
Maintenance Grant	2,598	2,807	90	88
School Grant	2,313	2,671	91	89
Teacher Grant	2,792	2,896	93	93

WHAT DO SCHOOLS SPEND THEIR MONEY ON?

Chart 3a: % Primary Schools Undertaking Activities Using SMG / SG

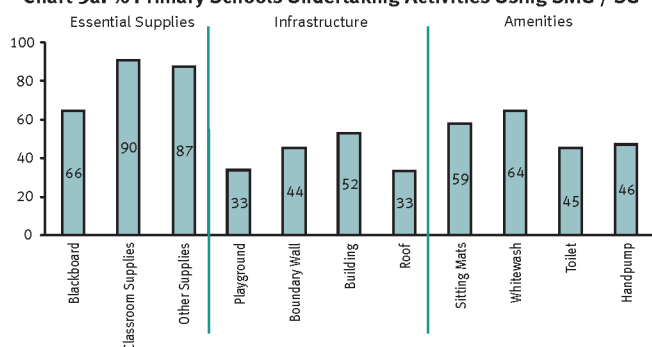
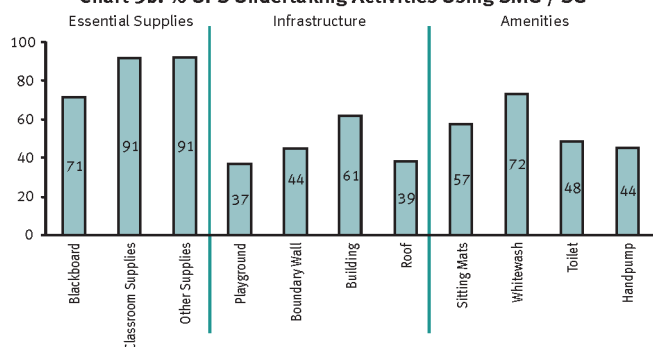


Chart 3b: % UPS Undertaking Activities Using SMG / SG



WHAT HAPPENS WITH MONIES SPENT?

What are the outputs and outcomes of financial investments in elementary education? In this section (below) we report on a) outputs - key facilities at the school level and enrolments in schools and b) outcomes - levels of learning in schools.

It is important to note that these numbers do not directly relate to school grants which are a small percentage of overall expenditures that are incurred in the country on elementary education. Rather, they are a reflection of overall expenditures under SSA.

WHAT FACILITIES DO SCHOOLS HAVE?

Chart 4: Status of Toilet Facilities (%)

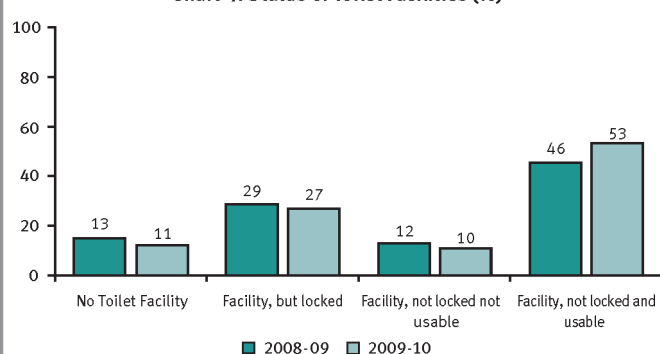
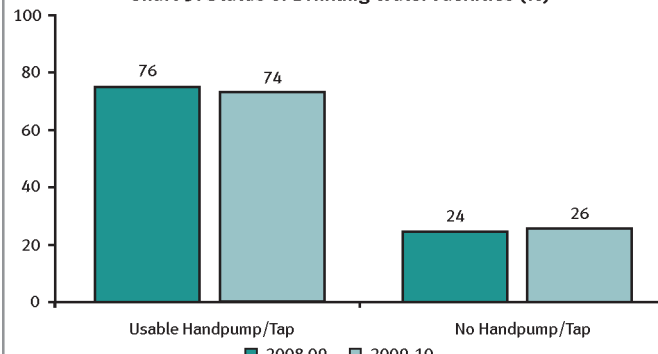


Chart 5: Status of Drinking Water Facilities (%)



HOW MANY CHILDREN ARE ENROLLED IN SCHOOLS?

Table 4: Enrolment in Govt. and Govt. Aided Schools

Age Group	2008-09	2009-10
Age: 6 -14 All	73	71
Age: 7-16 All	70	69
Age: 7-10 All	76	73
Age: 7-10 Boys	74	72
Age: 7-10 Girls	77	75
Age: 11-14 All	70	69
Age: 11-14 Boys	69	67
Age: 11-14 Girls	71	70
Age: 15-16 All	57	56
Age: 15-16 Boys	57	56
Age: 15-16 Girls	57	56

WHAT OUTCOMES DO SCHOOLS HAVE?

Table 5a: Attendance in Govt. and Govt. Aided Schools

	Primary		Upper Primary	
	2008-09	2009-10	2008-09	2009-10
% Enrolled Children Present (Average)	74	74	77	74
% Schools With Less Than 50% Enrolled Children Present	11	13	9	13
% Schools With 75% Or More Enrolled Children Present	55	55	62	56

Table 5b: Learning Levels in Govt. and Govt. Aided Schools

	Primary		Upper Primary	
	2008-09	2009-10	2008-09	2009-10
% Students Who Can Read Std. II Text**	53	53	75	83
% Students Who Can Do Division**	38	36	69	67

** For primary children in std. V & for upper primary children in std. VIII

RIGHT TO EDUCATION INDICATORS AND COST IMPLICATIONS

RTE NORMS FOR INDIA'S SCHOOLS

PTR Norms: Primary Schools

- Enrolment 1-60 = 2 Teachers
- Enrolment 61-90 = 3 Teachers
- Enrolment 91-120 = 4 Teachers
- Enrolment 121-200 = 5 Teachers
- Enrolment above 150 = 5 + 1 Head Teacher
- Above 200 = PTR (excl. Head Teacher) <= 40

PTR Norms: Upper Primary Schools

1. At least 1 teacher for every 35 children
2. Full-time head teacher when enrolment is > 100

Infrastructure Related Norms

1. An office-cum-store-cum-Head Teacher's room
2. Barrier-free access
3. Separate toilet for boys & girls
4. Safe & adequate drinking water facility for all students
5. Kitchen where Mid-Day Meal is cooked in the school
6. Playground
7. Arrangement for securing school building by boundary wall or fencing

Norms About Other School Facilities

1. Teacher learning equipment to be provided to each class as required
2. Library in each school providing newspapers, magazines and books on all subjects, including story books
3. Playmaterial, games and sports equipment to be provided to each class as required

DO SCHOOLS HAVE THE REQUIRED NUMBER OF TEACHERS?

Chart 6a: % Classes 1-5 Below the PTR Norms

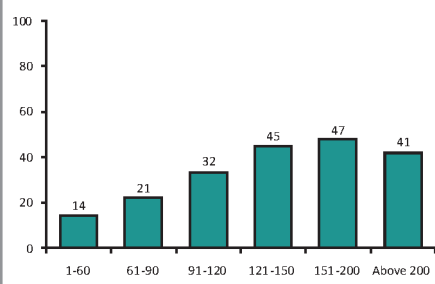
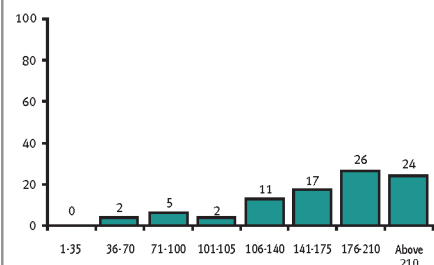


Chart 6b: % Classes 6-8 Below the PTR Norms



DO SCHOOLS HAVE THE REQUIRED INFRASTRUCTURE FACILITIES?

Table 6: % Schools with Infrastructure Facilities

Facility	Available	Not Available
Boundary Wall/Fencing	52	48
Drinking Water	83	17
HM Office / Store Room	74	26
Kitchen Shed	81	19
Library in Primary School	56	44
Library in UPS	73	27
Playground	62	38
Separate Toilet Facility Available	70	30

Table 7: Distribution of Schools as Per Facilities Available

# Facilities	% Available
0	1
1	3
2	6
3	12
4	21
5	25
6	22
7	11

How To Read This Table: This table has created an index of facilities available in a school as per core RTE facility requirements. Accordingly, 11% schools in India have all 7 infrastructure facilities, 22% have 6 of the 7 infrastructure facilities. 3% of schools only have 1 of the infrastructure facilities and there are 1% schools with no facilities as required by RTE.

WHAT ARE THE COST IMPLICATIONS FOR ACHIEVING RTE COMPLIANCE IN ALL SCHOOLS?

Table 8: Cost Implication for Shortfall in RTE

Facility	Schools			Cost	
	% Shortfall	# Total	# Shortfall	Per Unit* (in ₹)	Total (in ₹ lakhs)
Boundary Wall	48	817841	391092	NA	341102
Drinking Water	17	817841	137724	NA	50051
HM Office / Store Room	26	817841	208958	NA	519288
Kitchen Shed	19	817841	152854	NA	87621
Library in Primary School	44	659051	289851	NA	7058
Library in UPS	27	158790	42286	NA	4637
Separate Boys' / Common Toilet	9	817841	74832	NA	32515
Separate Girls' Toilet	29	817841	240002	NA	104262
Teachers for Classes 1-5			257694	NA	298486
Teachers for Classes 6-8			22824	NA	70813
Total					1515833

* Per Unit Costs vary by state. Total Shortfall for each item is aggregated from state level estimates.

How To Read This Table: This table provides a rough estimate of what it will cost India to ensure RTE compliance in all of India's schools. The total amount of money required for India is ₹15,158 crores. The estimate is based on a calculation of total shortfall in schools multiplied by the total unit cost required to meet the specific shortfall across states.

Data on unit costs has been sourced from the Project Approval Board Minutes and the Approved Annual Work Plan (AWP) for the Financial Year, 2010-11.

Data on # schools has been sourced from the District Information System for Education (DISE) 2009-10.



PERFORMANCE OF STATES

STATES	Sample Size		Grant Information				Shortfall in School Infrastructure						Cost of RTE Implemen- tation in Existing Schools (₹ lakh)
	No. of Schools 2009	No. of Schools 2010	Full Financial Year		Half Financial Year		Shortfall in PTR in Classes 1-5	Shortfall in PTR in Classes 6-8	Separate Toilet for Boys & Girls	Drinking Water	Kitchen Shed	Office cum Store	
			% Receiving All 3 Grants (2008-09)	% Receiving All 3 Grants (2009-10)	% Receiving All 3 Grants to the Date of the Survey	% Receiving All 3 Grants to the Date of the Survey							
Andhra Pradesh	641	632	68.72	85.2	8.46	50.99	12.63	2.82	66.39	26.66	33.12	35.29	119526
Arunachal Pradesh	181	259	61.54	59.91	38.78	30.92	15.77	2.67	69.74	36.84	35.97	23.02	20612
Assam	619	519	52.16	74.36	35.29	42.82	48.16	0	67.35	31.88	20.04	42.66	126705
Bihar	1043	967	62.66	71.77	28.26	48.42	40.67	19.83	62.67	15.48	36.37	31.4	210821
Chhattisgarh	437	425	66.89	75.14	44.4	28.62	31.63	11.11	53.49	10.46	13.8	21.43	62985
Goa	55	50	63.46	80.56	54.9	57.14	17.5	10	0	32	68.12	71.43	2973
Gujarat	754	623	65.4	79.03	52.14	75.72	7.49	1.54	22.95	9.11	11.58	19.77	28232
Haryana	538	528	57.05	71.21	43.27	51.46	32.32	3.08	20.55	10.4	49.02	14.09	20863
Himachal Pradesh	342	261	70.46	82.72	55.04	78.01	12.87	8.51	45.16	6.83	18.04	24.51	16606
Jharkhand	581	547	61.78	73.03	36.62	57.75	53.41	22.26	37.1	16.87	26.65	15.9	61673
Karnataka	777	769	76.46	87.06	53.01	81.82	6.67	0.64	35.71	13.02	7.16	28.19	65875
Kerala	317	275	66.41	64.71	43.65	62.1	4.54	1.23	20	8.66	1.88	11.74	2173
Maharashtra	973	902	67.04	85.02	51.11	58.02	17.39	0.59	24	16.25	21.75	65.77	200745
Manipur	225	125	27.15	65.91	10.78	24.67	17.7	5	75.58	54.46	40.78	31.93	4504
Meghalaya	159	110	22.73	23.47	2.47	10.53	15.84	0	70.49	58	40.57	66.36	8963
Mizoram	178	174	35.53	69.87	26.23	62.09	4	0	66.15	25.77	3.51	19.88	1429
Nagaland	257	223	84.96	88.38	64.35	84.15	6.03	0	51.96	29.95	18.06	16.44	1537
Orissa	802	741	45.91	72.85	27.67	63.69	40.77	9.48	42.19	20.38	25.66	25.4	90365
Punjab	525	449	55.39	80	21.37	70.44	36.75	11.63	24.24	7.55	5.43	21.12	20737
Rajasthan	921	896	37.06	54.77	12.22	29.76	22.5	2.69	26.06	17.05	16.18	8.85	85705
Sikkim	85	69	50	57.45	41.51	54	1.54	0	25	20.29	4.35	7.35	554
Tamil Nadu	775	662	NA	NA	NA	NA	21.74	3.11	36.36	8.98	3.28	45.03	64386
Tripura	114	98	33.72	46.67	10.71	28.57	13.48	0	52.63	35	11.58	11.22	23324
Uttar Pradesh	2010	1,896	51.72	65.02	22.82	31.55	67.22	32.19	38.52	13.61	10.66	11.42	156771
Uttaranchal	364	337	57.48	72.57	34.31	25.83	35.55	0	46.67	16.05	3.67	12.08	4213
West Bengal	481	408	43.59	68.89	16.82	24.46	50.69	0	40.35	17.1	14.03	20.72	104684
UNION TERRITORIES													
Dadra & Nagar Haveli	23	26	77.27	89.47	20	35.29	28.57	6.25	0	20.83	0	68	399
Daman & Diu	11	9	50	100	50	100	0	NA	0	12.5	0	12.5	17
Puducherry	43	41	11.11	94.87		100	0	0	0	0	24.39	0	64
INDIA	14,231	13,021	57.36	72.55	33.06	49.93	32.23	8.32	29.96	16.84	18.69	25.55	1515833